



32a High Street, Dorchester-on-Thames, Wallingford, Oxon, OX10

£2,100 PCM - 2nd April 2026.

- 3/4 bedroom house in village location
- Private enclosed garden
- Ensuite to bedroom one
- Ultrafast broadband
- Carport for 2 cars
- EPC C

32a High Street, Wallingford OX10 7HN

Immaculately presented 3/4 end terraced house, located in the centre of this sought after village within easy walking distance of shops, pubs and farm shop. Comprising of sitting room, kitchen breakfast room with electric range master cooker, fridge/freezer, washing machine and dishwasher, 2nd reception room or bedroom 4, 3 bedrooms, ensuite shower room, family bathroom with bath and separate shower. Air source pump heating. Lovely garden, car port with parking for 2 cars. Council tax band E. EPC C.

The Ofcom Broadband Checker states there is:

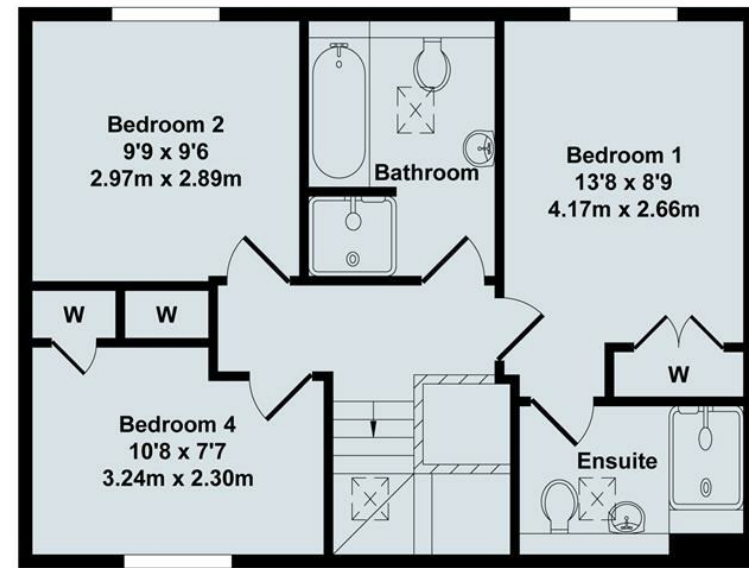
- Ultrafast broadband has download speeds of greater than 300Mbps.

When an application is agreed a holding deposit will be required of a maximum of one weeks rent



Council Tax Band: E






Total Approx. Floor Area 1180 Sq.Ft. (109.60 Sq.M.)
 All items illustrated on this plan are included in the "Total Approx Floor Area"





Energy Efficiency Rating

	Current	Potential
Very energy efficient - lower running costs		
(92 plus) A		91
(81-91) B		
(69-80) C	78	
(55-68) D		
(39-54) E		
(21-38) F		
(1-20) G		
Not energy efficient - higher running costs		
England & Wales	EU Directive 2002/91/EC	



Directions

Viewings

Viewings by arrangement only. Call 01235 514267 to make an appointment.

Council Tax Band

E